

Center for Technology & Training  
Local Technical Assistance Program  
Michigan Technological University  
1400 Townsend Drive, 309 Dillman Hall  
Houghton, MI 49931-1295  
(906) 487-2102

# MICHIGAN Transportation Asset Management Workshop

*Kick-start your asset management program*

June 8, 2010 – Grand Rapids

June 9, 2010 – Howell



## DID YOU KNOW?

State law allows cities and villages to transfer up to 100% of their major street fund to their local system if they have adopted an asset management process for their major and local street system.



MICHIGAN TRANSPORTATION  
ASSET MANAGEMENT COUNCIL



Michigan's  
Local Technical  
Assistance Program

Center for  
**Technology & Training**  
Michigan Tech Transportation Institute

# MICHIGAN Transportation Asset Management Workshop

## Who Should Attend?

This workshop is intended for agency managers, finance professionals, elected and appointed officials, as well as engineers and DPW maintenance managers. It will be of interest to anyone who is responsible for making pavement management or project selection decisions and is interested in learning what an asset management program can do for their agency. Agencies that send elected officials and management personnel along with engineering and maintenance personnel will benefit the most from this workshop.

## Overview of Training

Implementing an asset management program goes a long way toward maximizing invested road funds, but there is no “one-size-fits-all” solution for asset management. Every agency has unique needs, goals, and resources.

This workshop is designed to help you understand the basic concepts of asset management so you can design a program that makes the most of your resources, and provides the greatest benefit to your agency. The workshop also provides techniques for explaining asset management concepts to constituents and peers.

## Dates and Locations

June 8, 2010	Hampton Inn 5200 28th St. SE Grand Rapids, MI 49512
June 9, 2010	Cleary University-Livingston Campus Johnson Center 3725 Cleary Dr. Howell, MI 48843

## Cost and Registration

Employees of Public Agencies.....	\$20.00
Employees of Private Companies.....	\$50.00

The cost for this workshop includes coffee/break refreshments and lunch. To register, call Michigan LTAP at (906) 487-2102. Space for each session is limited; please register early.

*Cancellation Policy: No-shows and cancellations within three business days prior to the workshop will be charged the full registration fee. Substitutions will be accepted.*

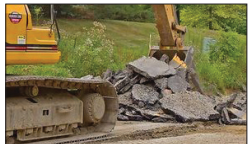
## Agenda

8:00	Introductions
8:20	What Is Asset Management?
8:35	Asset Management Exercise
9:05	Asset Management in Michigan
9:35	Assessing Pavement Condition
10:05	Break
10:25	What is the <i>Mix of Fixes</i> ?
11:30	Projecting Costs, Funding, Future Conditions
12:00	Lunch
1:00	What are Trade-offs? Where are Candidate Projects?
1:30	Establishing Policies, Targets, and Measures
1:45	Analyzing Trade-offs and Priorities; Establishing a Program
2:00	Summary Exercise: It's your turn; show us what you can do
2:30	Break
2:45	Requirements for Reporting
3:05	Data Exercise: What you need and what they need
3:45	Wrap Up
4:00	Adjourn

## Instructors

Terry McNinch is the director of Michigan's Local Technical Assistance Program at Michigan Tech University. He has been involved with asset management for local agency roadway systems for over 13 years and has instructed several classes on the topic.

Tim Colling, PE, is the assistant director of Michigan's Local Technical Assistance Program. He is a registered professional engineer in Michigan and Wisconsin. Prior to joining LTAP in 2002, Mr. Colling worked as a Civil Engineering consultant in Michigan for 10 years. Mr. Colling teaches classes in pavement condition rating and traffic safety. He also conducts training sessions in the use of RoadSoft® to manage roadway assets and develop long range transportation plans.



Michigan's  
Local Technical  
Assistance Program



Center for  
**Technology & Training**  
Michigan Tech Transportation Institute

