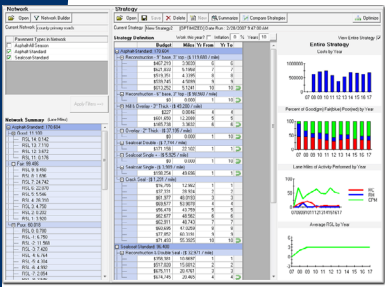
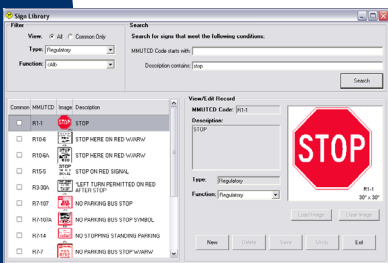




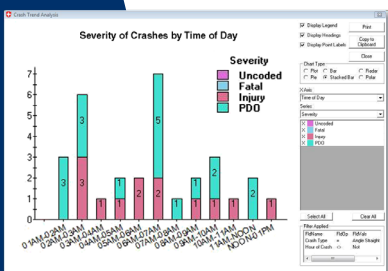
GIS-based Asset Management System



Optimize Maintenance



Manage Signs



Analyze Safety

Roadsoft is a software suite designed for collecting, storing, and analyzing data associated with transportation assets. Built on an optimum combination of database engine and GIS mapping tools, Roadsoft provides a quick, smooth user experience and almost unlimited data-handling capabilities.

Roadsoft was developed and is supported by the Center for Technology & Training, which is part of the Department of Civil & Environmental Engineering at Michigan Technological University.

Types of Data

Roadsoft manages a variety of data associated with transportation systems. Specific types of data include:

- ◆ Roads
- ◆ Signs
- ◆ Bridges
- ◆ Culverts
- ◆ Driveways
- ◆ Guardrails
- ◆ Drainage Structures
- ◆ Intersections
- ◆ Pavement Markings
- ◆ Sidewalks
- ◆ Traffic Counts
- ◆ Traffic Signals
- ◆ Crash Data (dependent on data source & format)

Features

GIS-Based Map Interface provides a clear visual representation of the roadway assets in the database. Using map layers, you can easily display or hide specific types of data and you can adjust colors, sizes, and shapes to customize the view.

Laptop Data Collection uses a GPS connected to a laptop with the Laptop Data Collector utility to provide a convenient way to collect and maintain accurate data for your Roadsoft database while outside of the office.

Mobile Data Collection Application is an application for mobile devices available for Android and iOS devices. Mobile allows you to manage inventory information and activities such as work orders, maintenance, and inspections while on-site or on the go.

Inventory of Assets includes detailed data for pavements, signs, and other roadway assets in your jurisdiction.

Asset Management Analysis Tools enable you to create and implement efficient and effective construction and maintenance strategies to maximize the return on your transportation investment.

Data Mining and Report Generation Capabilities provide summaries of specific data in the database, and enhance understanding for you and between you and the other transportation stakeholders in your jurisdiction.

Safety Analysis Tools enable you to filter, sort, and analyze crash data patterns. Potential network screening can help identify problem areas at road segments, intersections, and on curves. Roadsoft includes NCHRP documentation to help find countermeasures that will reduce the frequency and severity of crashes.

Getting Started

Roadsoft software, technical support, and training is available to Michigan public transportation agencies at no cost. For more information, visit our website at www.roadsoft.org, or call 906-487-2102.

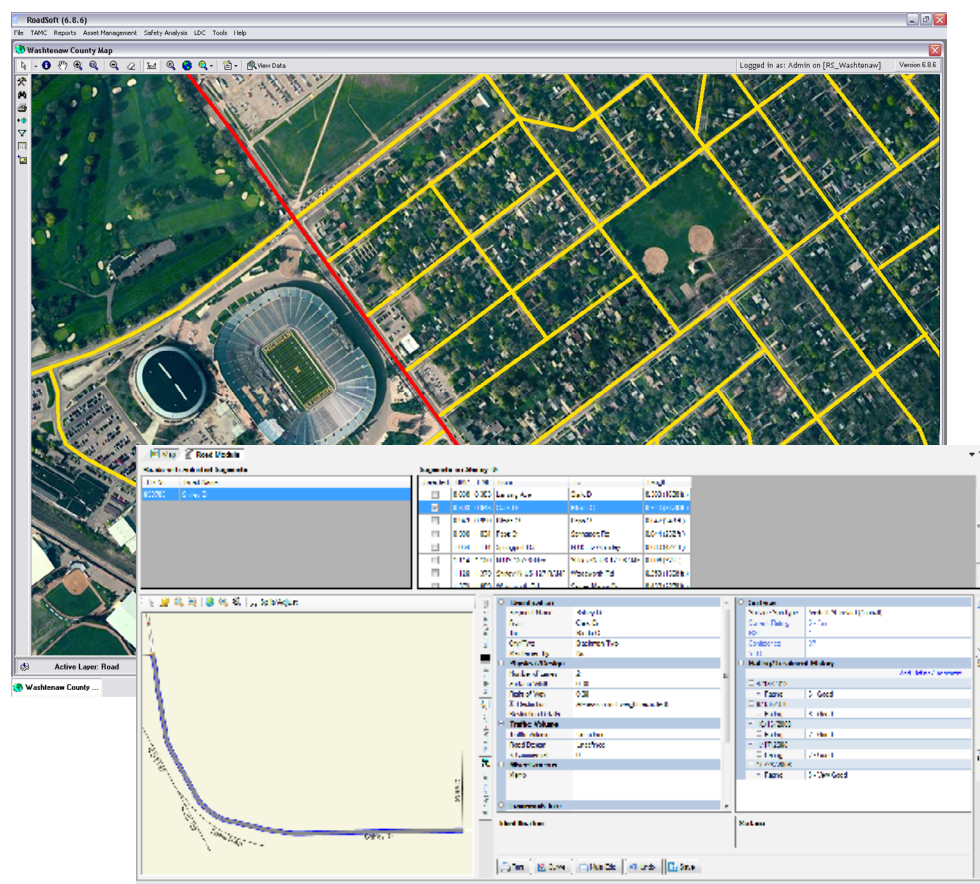
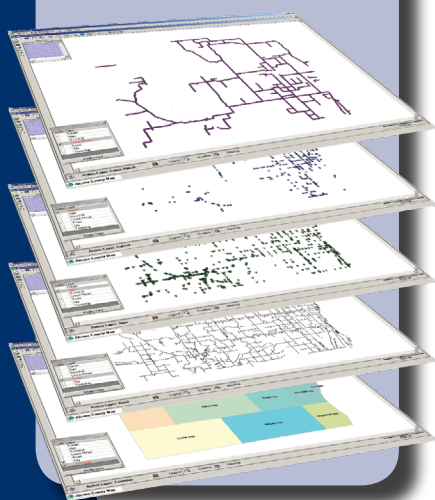
**Center for
Technology & Training**
 Michigan Technological
 University – Dept. of Civil &
 Environmental Engineering
 Houghton, MI
 USA

906.487.2102
roadsoft@mtu.edu
www.roadsoft.org

A *Geographic Information System* (GIS) is the technology used to organize, analyze, and view data from a spatial perspective. A GIS map organizes information into layers that allow you to display different types of data simultaneously. In Roadsoft, each layer of the map is connected to data in the database. When you select an item on a layer, the system makes available the database records associated with that item.

When you make a data layer visible in Roadsoft, items associated with that layer appear on the GIS map. Making multiple layers visible simultaneously provides a clear view of the physical relationship between different types of data on the map.

Roadsoft uses an integrated database, which means the data for all of the layers are interconnected between multiple tables. This integration of data establishes relationships between different types of data and aids in complex data analysis.



**Center for
Technology & Training**
Michigan Technological
University – Dept. of Civil &
Environmental Engineering
Houghton, MI
USA

906.487.2102
roadsoft@mtu.edu
www.roadsoft.org

Laptop and Mobile Data Collection

Collecting Data

With the Laptop Data Collector (LDC) and a low-cost GPS, you can collect data from the passenger seat of a moving vehicle. As you travel along a road, the GPS communicates your position to the LDC, which grabs the asset nearest you, and then opens all associated database records. You enter the data you need and then move on. It all happens real-time at the pace you set for yourself.



The time required to collect and enter data is often the highest hurdle standing between you and a useful information management system. How can you get over this hurdle? The Roadsoft Laptop Data Collector (LDC) will give you a boost.

The LDC, a mobile data collection utility designed specifically for entering data into Roadsoft, enables you to enter pavement, signs and other asset information from the passenger seat of a moving vehicle. To get started, simply install it into a laptop, load the appropriate map and data files, attach a low-cost GPS, and you're ready to go. It's easy to use, convenient and proven.



Easy to Use

The passenger seat of a moving vehicle is a difficult place to use software. The Roadsoft development team understood this fact, which is why they designed the LDC unlike other pieces of software. "Plug-and-play" communication with the GPS, fields that fill in automatically, and extensive use of keyboard shortcuts make the LDC amazingly easy to use in the office or on the road.

Convenient

The LDC uses the same map files as Roadsoft, but requires only a small piece of the main database, which makes data transfer and synchronization simple, quick, and convenient. The LDC connects easily to any GPS that meets NMEA 0183 requirements. In fact, the less expensive GPS units work best because they don't include proprietary security features like many of the more expensive units.

Proven

Since 2003, almost 300 local and regional agencies in Michigan and the Michigan Department of Transportation have used the LDC to collect Pavement Surface Evaluation Ratings (PASER) on the State's federal aid and local road networks, logging over 250,000 miles of data collection travel.

"The Laptop Data Collector is efficient and easy to use; rating roads is a breeze. It's obviously designed with the end-user in mind."

Vince – GIS Coordinator and Transportation Planner



Center for
Technology & Training

Michigan Technological
University – Dept. of Civil &
Environmental Engineering
Houghton, MI
USA

906.487.2102
roadsoftus@mtu.edu
www.roadsoft.org



Mobile Data Collection

On Site or On the Go

With Roadsoft Mobile and a smartphone or tablet, you can take Roadsoft with you anywhere. Roadsoft Mobile allows your work crews to look up asset conditions and scheduled work plans wherever they are, even when they're at the work site or traveling to or from the office.

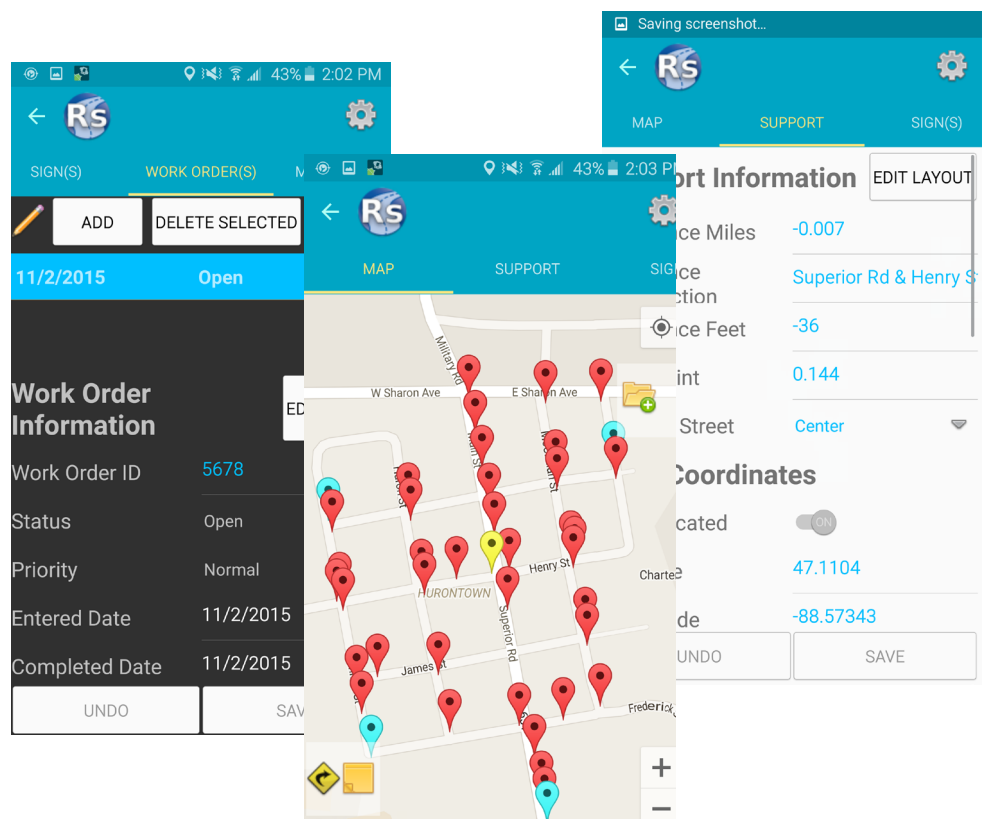
Roadsoft and Roadsoft Mobile exchange data through the Cloud, allowing everyone to keep up to date with the latest changes to the database.

Agency work crews need to be able to plan ahead when preparing for the day. Being able to check the latest condition of their assets is an important part of planning, because it allows crews to see what assets require work, what kind of work those assets need, and to gather the necessary materials for that work. The Roadsoft Mobile application is a useful tool that allows users to view and update asset information wherever they may be.

Roadsoft Mobile is an app available for both Android and iOS devices. It can be used on any mobile device with a functioning GPS. Mobile allows users to create and manage assets and asset activities such as work orders, inspections, and maintenance.

Upload data from the desktop Roadsoft software to the Cloud, and then it can be downloaded into Mobile while out at a work site, worked with, and the updated data can be downloaded back to desktop Roadsoft.

Currently Mobile is available for the Culvert, Road, Sidewalk, and Sign Modules, though more modules may be added over time. Combined with Roadsoft desktop software, Mobile provides maintenance personnel with a powerful set of tools to enable asset management on the go.



Center for
Technology & Training

Michigan Technological
University – Dept. of Civil &
Environmental Engineering
Houghton, MI
USA

906.487.2102
roadsoft@mtu.edu
www.roadsoft.org

Inventory of Assets

Foundations

Establishing an inventory of assets for an asset management system is like pouring footings and laying block before building a house. It requires a significant investment of time, money, and effort, and most if it is buried and out of sight when you're finished.

Like a foundation for a beautiful house, an inventory of assets for an asset management system provides a solid base on which to build more visible, exciting, and valuable structures.



You're probably responsible for several different types of roads, thousands of signs, miles of guardrails, and many other valuable assets within your jurisdiction. Wouldn't it be nice to know that you're doing everything you can to manage and maintain these assets at an optimum level of effectiveness? Millions of dollars worth of transportation assets are wasted every year within roadway systems across the U.S. simply because people are overwhelmed by all the information.

How can you manage it all so it makes sense? Roadsoft can help.

Roadsoft enables you to build and maintain a complete, detailed inventory of transportation assets for your jurisdiction. With Roadsoft you never have to wonder or guess; you'll know exactly what you have, where it is, and what to do to keep it working well. The bottom line: you'll enjoy a clearer view of your bottom line.

The Roadsoft database enables you to build and maintain an inventory of roads, signs, culverts, guardrails, pavement markings and other assets. For each type of asset in the database, Roadsoft stores the following basic information:

- ◆ Location along a road using a linear reference or GPS coordinates
- ◆ Physical description
- ◆ Construction, maintenance, inspection, and rating information

In addition to the basic information, Roadsoft stores the following additional information for specific types of assets:

- ◆ Curb and gutter, shoulders, and traffic counts for roads
- ◆ Sign retroreflectivity
- ◆ Approaching and departing terminals for guardrails, along with individual records for beams, blocks, and posts
- ◆ Culvert entrance and exit structures, depth of cover, and skew angle.
- ◆ Application date for pavement markings
- ◆ Much more – contact the Center for Technology & Training at (906) 487-2102 for more information.

"The more information I add, the more powerful and useful Roadsoft gets!"

Matt – Engineer Technician



**Center for
Technology & Training**

Michigan Technological
University – Dept. of Civil &
Environmental Engineering
Houghton, MI
USA

906.487.2102
roadsoftus@mtu.edu
www.roadsoft.org



Pavement Management and Analysis Tools

A Mix of Fixes

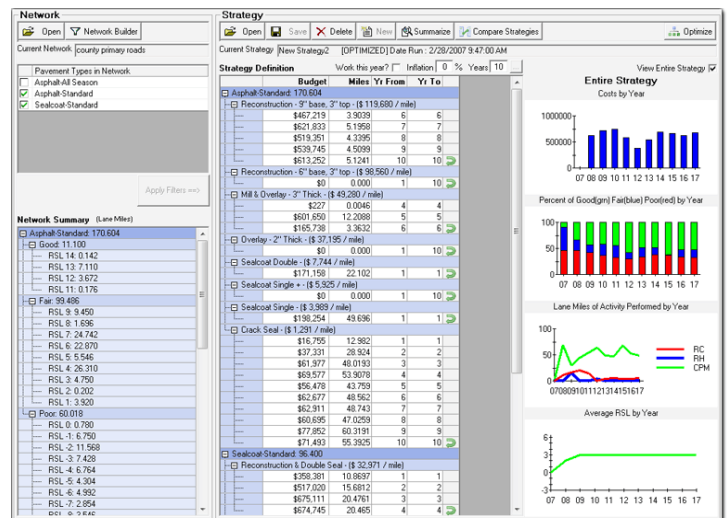
Historically, our roads have been managed with a “worst first” strategy, and reconstruction has been the preferred maintenance activity. But experience has taught us that carefully administered preventive maintenance activities go a long way toward extending the life of our roads.

The Strategy Evaluation and Strategy Optimization features of Roadsoft use pavement deterioration curves, statistical analysis functions, and other mathematical optimization tools to determine specific combinations of maintenance activities that provide the greatest return on your investment.

Different types of pavement deteriorate at different rates, and different maintenance activities affect the service life of the pavement differently. Everything costs money and everyone is being forced to do more with less. Plus, political pressures associated with managing roads are steadily increasing. The process of finding the perfect combination of maintenance activities is mind boggling in its complexity.

How can you figure it all out; and how can you possibly explain it to anyone?

Roadsoft's Strategy features cut through the confusion. The *Strategy Evaluation* and *Strategy Optimization* tools. To begin, you enter current pavement condition values using the Pavement Surface and Evaluation Rating (PASER) system and define the performance of different types of construction and maintenance activities. Then you enter the amount of money you have available in your budget and the construction and maintenance activities that you want to consider. With a few mouse clicks you can generate a plan that combines construction and maintenance activities to maximize service life across the network of roads being analyzed. The evaluation and optimization features help you to make the most of all your resources. Not only that, but the software creates a plan that is clear enough to explain to whomever else needs to know.



Then you use can the *Project Planning and Strategy Tool* to compare road segments in the selected network and identify ideal candidates for the construction and maintenance activities proscribed by the Strategy Evaluation and Strategy Optimization tools to. First, you select a group of roads from an existing Roadsoft strategy or filter. Next, you assign road segments to activities, and as you assign roads in recent years the Project Planning Tool will update the estimated PASER ratings of those roads later on in the plan, helping you to manage your road conditions long-term. Then you can export a plan into the Project Builder to finish creating a road maintenance plan.

“The strategy evaluation and optimization tools help us generate pavement management plans that our decision-makers understand. We’re able to apply the right fix in the right place at the right time.”

Brian – County Highway Engineer



Center for
Technology & Training

Michigan Technological
University – Dept. of Civil &
Environmental Engineering
Houghton, MI
USA

906.487.2102
roadsoft@mtu.edu
www.roadsoft.org

Detailed Reports, Data Mining and Exports

Real-Time Results

It has been raining hard for hours and snow is melting fast this Spring day. Two major rivers in your jurisdiction are near flood stage. You know from experience that any bit of debris that restricts the flow of water under the roads that cross these rivers can cause serious flooding.

You open the Roadsoft report and filter tool. Within minutes you print a detailed report that lists every culvert along the two swollen rivers. With the report in hand, your maintenance crew heads out to inspect the river crossings. They clean two culverts that are nearly clogged with branches and debris. Together you avoid a minor disaster.



Roadsoft reports provide a simple, clear summary of the status of specific information in the database. Roadsoft includes over 50 default reports, and allows an almost unlimited number of custom reports using the extensive data mining capabilities. You can also export the data from generated reports for use in other database programs and export the entire GIS file for use in other GIS applications.

Culvert Inventory Report

Culvert ID	Distance from Int.	Date Built	Type	Shape	Waterway	Entrance Structure	Exit Structure	Size (Diam. Width)	Length	Span	Rise	Depth of Cover	# of culverts	Inland Lakes and Streams Protection Act	Wetland Protection Act
PR No: 1724922															
Intersection: Samsell Rd & DeCost Rd															
0.259	1/1/1900	Corrugated Steel Pipe	Circular	Wallace Creek	Down: None	None	36.0 in	36 ft			18.0 in	2	0	False	False
Description:															
Memo:															
Intersection:															
0.409	1/1/1900	Corrugated Steel Pipe	Circular	Wallace Creek	Down: None	None	36.0 in	36 ft			24.0 ft	2	0	False	False
Description:															
Memo:															
Intersection:															
0.529	1/1/1900	Corrugated Steel Pipe	Pipe Arch	Wallace Creek	Down: None	None	36.0 in	36 ft			24.0 in	2	0	False	False
Description:															
Memo:															
PR No: 1720201															
Intersection: Alper Smith Rd & E Black River Rd															
-0.114	1/1/1900	Corrugated Steel Pipe	Circular	Undefined	Down: None	None	30"	48'			36"	2	0	False	False
Description:															
Memo:															
PR No: 1727207															
Intersection: F 41 & E Dewar Rd															
-0.007	1/1/1900	Corrugated Steel Pipe	Pipe Arch	Undefined	Pipe End Section	Pipe End Section	22" x 34"	54'			36.0 in	2	90	False	False
Description:															
Memo:															



Center for
Technology & Training

Michigan Technological
University – Dept. of Civil &
Environmental Engineering
Houghton, MI
USA

906.487.2102
roadsoftus@mtu.edu
www.roadsoft.org



Sign Management Tools

Streamline Sign Maintenance

Does your sign maintenance process involve a lot of paper? How are you assured that work orders done on the fly are accurately documented in the system?

Roadsoft Mobile combined with Roadsoft desktop software allows for streamlined paperless workflow for adding and completing sign work orders, maintenance, and inspections. You set up your crews with the data they need for the day, they access the data on their phones or tablets, and they submit the completed work before you see them back at the shop. An urgent repair comes up after the crews are out? No problem. Work orders can be added on the fly in Roadsoft Mobile so the data is captured immediately.



The Roadsoft sign module includes tools and features that help you to create a location-based sign management system for your agency.

In addition to features for creating and maintaining a detailed inventory of signs and supports, the module includes features for inspecting and recording sign and support condition information, including retroreflectivity.

Key Features

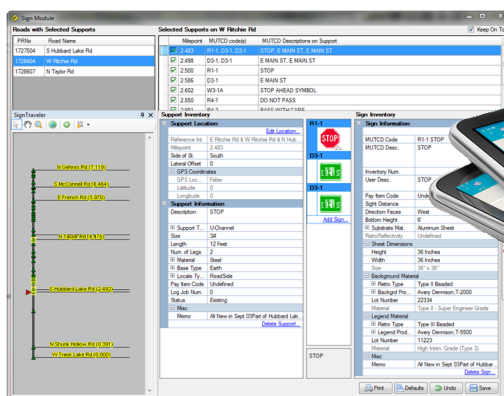
Laptop and Mobile Data Collection with the Roadsoft Laptop Data Collector (LDC) provides a practical, time-efficient way to establish an inventory of your signs and collect physical condition and retroreflectivity data.

Roadsoft Mobile for Android and iOS enables the completion of sign work orders, maintenance, and inspections on the go right from a tablet or smartphone.

Sign Inspection and Management features provide a convenient way to create and track condition, maintenance and retroreflectivity records. Work orders provide a means for clearly communicating with your maintenance crew, and also establish a solid audit trail to help resolve future data or legal problems.

User-Defined Priorities allow you to adjust the level of urgency for specific types of signs and maintenance tasks to ensure that the most important work is completed first.

The Sign Library is pre-loaded with a complete set of signs, based on the Federal MUTCD. The Sign Viewer/Loader utility allows you to customize the default library with any unique signs your agency uses.



“Working for a rural county with limited resources, I appreciate the power and simplicity of the Roadsoft sign module. Without it, I would not be able to keep up with the inspection and maintenance of our 3,200 road signs.”

Harold - Road Commission Superintendent

Center for
Technology & Training
Michigan Technological
University – Dept. of Civil &
Environmental Engineering
Houghton, MI
USA

906.487.2102
roadsoft@mtu.edu
www.roadsoft.org

Printing paid for by the Center for Technology & Training

Safety Analysis Tools

From Information to Understanding

Data becomes useful when you understand it. Data becomes valuable when you do something based on that understanding. Organizations that transform data into useful information make decisions quickly, manage assets effectively and improve continuously.

The safety analysis tools in Roadsoft organize and present your jurisdiction's crash data so you can make decisions that improve the safety of your roads. Is there anything more valuable?



Every crash in your jurisdiction is connected to a wealth of information that you can use to make your roads safer. All of that information is useless if you don't understand it. The safety analysis features in Roadsoft organize your crash data in ways that are easy to understand.

Key Features

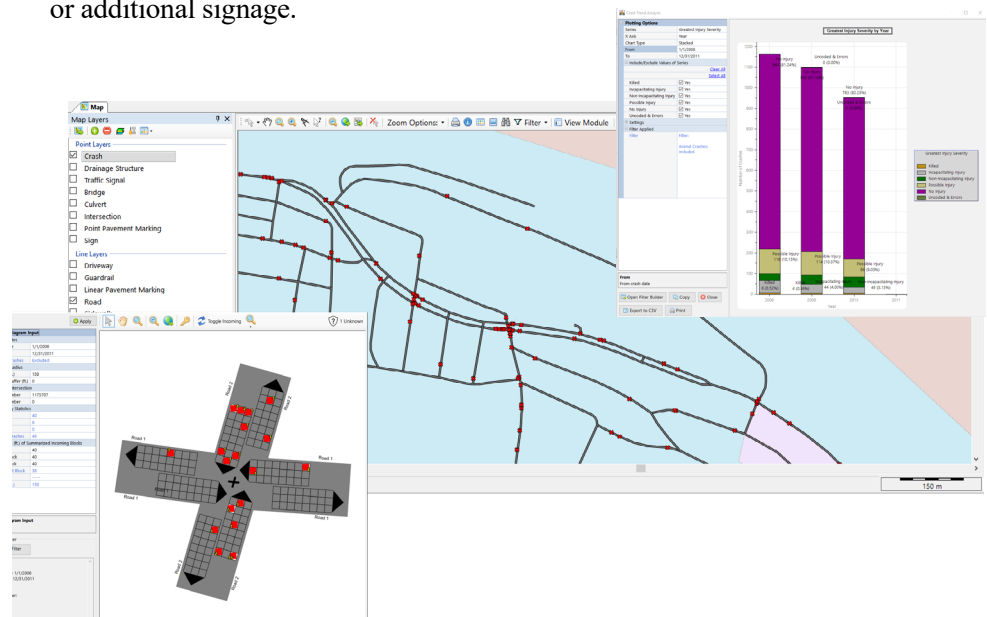
Detailed Safety Analysis tools enable you to analyze intersections, segments and curves, generate graphs to provide visual representations of trends, identify roads eligible for federal safety funding, and more.

Network Diagnostics tools enable you to examine individual crashes to establish patterns and relationships, which can help identify areas where engineering changes could reduce the frequency and severity of crashes. Once you've identified problem areas, built-in links to NCHRP documentation can help you implement countermeasures.

Integrated Crash Data allows you to visually compare crash data to roadway layers such as signs and signals. You can also overlay aerial photos and navigate through all levels of detail, including a public copy of the actual crash form.

Powerful Reporting features include detailed standard crash reports and advanced filtering options, which allow unlimited reporting capabilities.

Collision Diagrams provide visual representations of crash distributions at specific intersections. Collision diagrams also provide a means for measuring improvements, such as signal timing changes or additional signage.



"The Roadsoft safety analysis tools provide a concise way of looking at complicated crash information."

Dean – Traffic Engineer



Center for
Technology & Training

Michigan Technological
University – Dept. of Civil &
Environmental Engineering
Houghton, MI
USA

906.487.2102
roadsoftus@mtu.edu
www.roadsoft.org

